

CF ANIOTIKOS ♩ = 152

The first system of handwritten musical notation consists of two staves. The top staff is in treble clef with a key signature of two sharps (F# and C#). It begins with a 7-measure rest, followed by a series of eighth and sixteenth notes, including some beamed sixteenth-note patterns. The bottom staff is in bass clef with the same key signature, featuring a melodic line with eighth and sixteenth notes. A fermata is placed over the final note of the bottom staff.

Two empty musical staves, one in treble clef and one in bass clef, positioned between the first and second systems of notation.

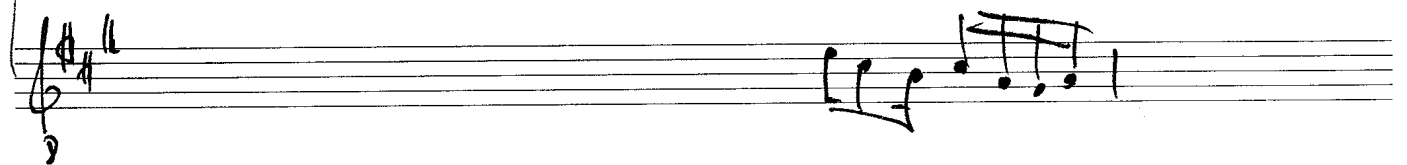
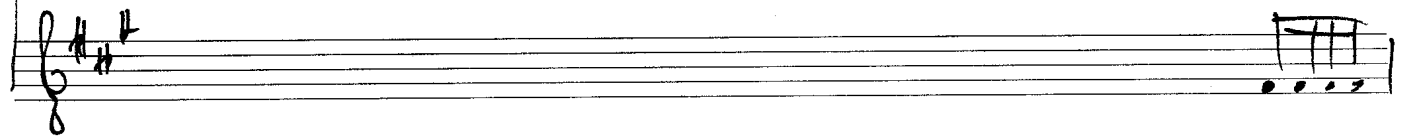
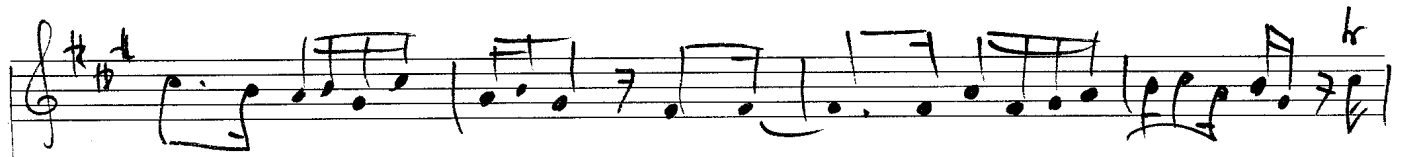
The second system of handwritten musical notation consists of four staves. The top staff is in treble clef with a key signature of two sharps, containing a melodic line with eighth and sixteenth notes. The second staff is in bass clef with the same key signature, featuring a melodic line with eighth and sixteenth notes. The third staff is in treble clef with a key signature of two sharps, containing a melodic line with eighth and sixteenth notes. The fourth staff is in bass clef with a key signature of two sharps, featuring a melodic line with eighth and sixteenth notes.

The third system of handwritten musical notation consists of a single staff in treble clef with a key signature of two sharps. It contains a melodic line with eighth and sixteenth notes, including some beamed sixteenth-note patterns.

Two empty musical staves, one in treble clef and one in bass clef, positioned between the third and fourth systems of notation.

The fourth system of handwritten musical notation consists of a single staff in treble clef with a key signature of two sharps. It contains a melodic line with eighth and sixteenth notes, including some beamed sixteenth-note patterns.

Two empty musical staves, one in treble clef and one in bass clef, positioned at the bottom of the page.





Handwritten musical notation on two staves. The key signature is three sharps (F#, C#, G#). The first staff begins with a treble clef and a *fin* marking. The second staff continues the melody with various rhythmic values and accents.

Two empty musical staves.

Handwritten musical notation on a single staff, continuing the melody with a fermata over a note.

Handwritten musical notation on a single staff, showing a complex chordal texture with many notes.

Handwritten musical notation on two staves. The first staff includes a *S.* marking with an arrow pointing to the right. The second staff contains dense chordal accompaniment.

Handwritten musical notation on a single staff, continuing the melody with various rhythmic patterns.

Two empty musical staves.

Handwritten musical notation on a single staff, showing a melodic line with eighth and sixteenth notes.

Handwritten musical notation on a single staff, showing dense chordal accompaniment with many notes.

Handwritten musical notation on a single staff. The key signature has two sharps (F# and C#). The notation consists of a series of eighth and sixteenth notes, some beamed together. A handwritten 'f' is written below the first few notes.

Handwritten musical notation on a single staff. The key signature has two sharps (F# and C#). The notation consists of a series of eighth and sixteenth notes, some beamed together.

Handwritten musical notation on a single staff. The key signature has two sharps (F# and C#). The notation consists of a series of eighth and sixteenth notes, some beamed together. A handwritten 'f' is written below the first few notes. The staff ends with a double bar line and a fermata symbol.

Handwritten musical notation on a single staff. The key signature has two sharps (F# and C#). The notation starts with a series of whole notes, followed by a series of eighth and sixteenth notes. A handwritten 'a' is written below the first few notes.

Handwritten musical notation on a single staff. The key signature has two sharps (F# and C#). The notation consists of a series of eighth and sixteenth notes, some beamed together. Below the notes are several vertical lines, possibly indicating fingerings or accents.

Handwritten musical notation on a single staff. The key signature has two sharps (F# and C#). The notation consists of a series of eighth and sixteenth notes, some beamed together.

Handwritten musical notation on two staves. The top staff has a key signature of two sharps (F# and C#) and contains a series of eighth and sixteenth notes, some beamed together. The bottom staff contains a series of eighth and sixteenth notes, some beamed together. A handwritten '8' is written below the first few notes of the bottom staff.

