

Svita iz Šumadije

Serbien

Flöte (Dvojnica)

Flute part with a treble clef and a key signature of one sharp (F#). The music features a complex, rhythmic melody with many sixteenth notes and some trills. The piece ends with a double bar line and repeat dots.

♩ = 60 (leichtes accelerando)

Flöte (Dvojnica)

Gitarre

Guitar part with a treble clef and a key signature of one sharp (F#). The music consists of a steady, rhythmic accompaniment of eighth notes. The piece ends with a double bar line and repeat dots.

Gitarre

Continuation of the guitar part from the previous system, measures 5 to 8.

9 *tutti* G D⁷ G cm D⁷ G

Gitarre

Continuation of the guitar part, measures 9 to 12. Chord symbols are placed above the staff.

13 G D⁷ G G cm A D G⁷

Gitarre

Continuation of the guitar part, measures 13 to 16. Chord symbols are placed above the staff.

17 C G C D G D G

Gitarre

Continuation of the guitar part, measures 17 to 20. Chord symbols are placed above the staff.

21 C G C D⁷ G D⁷

Gitarre

Continuation of the guitar part, measures 21 to 24. Chord symbols are placed above the staff.

25 G cm D⁷ G

Gitarre

Continuation of the guitar part, measures 25 to 28. Chord symbols are placed above the staff.

29 G D⁷ G A D

♩ = 96

33 D⁷ G D⁷ A D G

37 D⁷ G D⁷ 1. 2.

42

46

50 D⁷ G D⁷ A D G

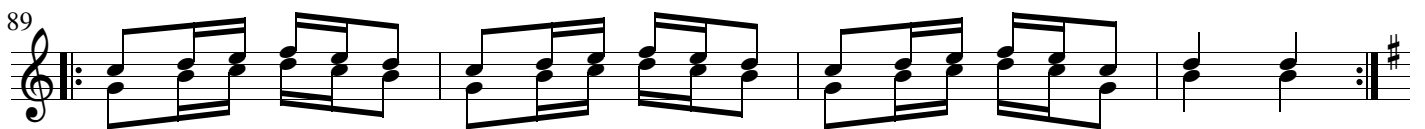
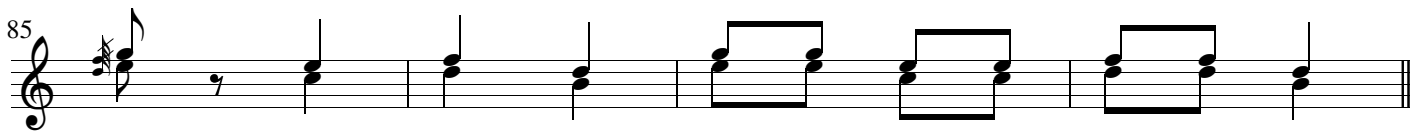
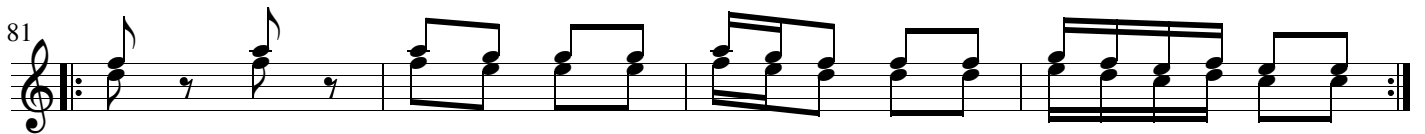
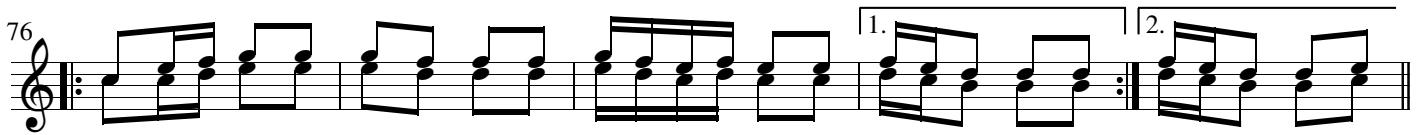
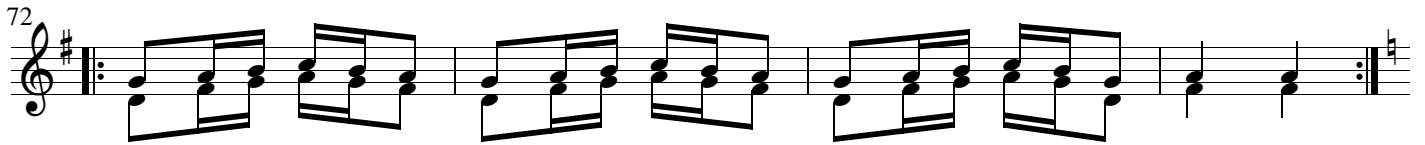
54 D⁷ G D⁷ 1. 2.

♩ = 160

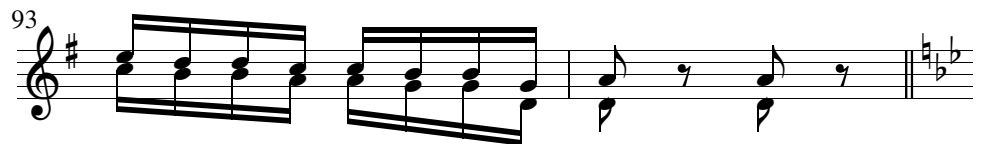
59 1. 2.

64

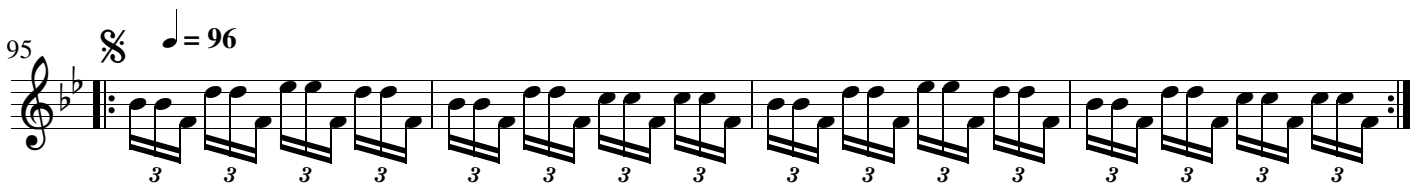
68



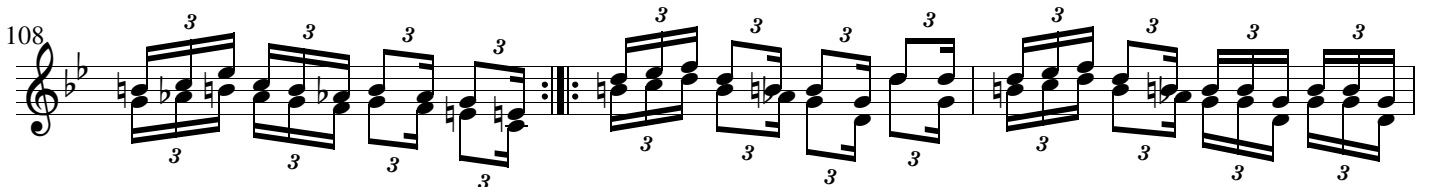
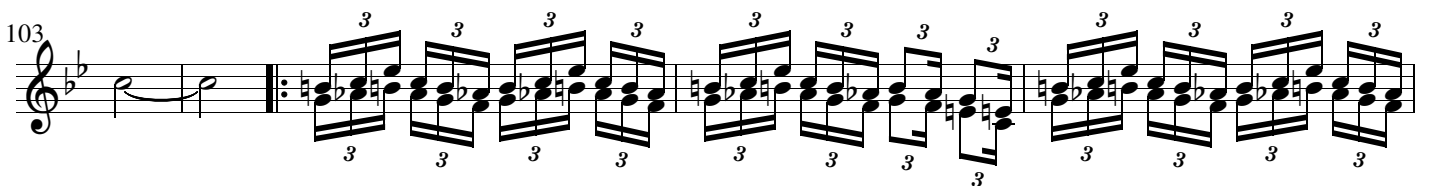
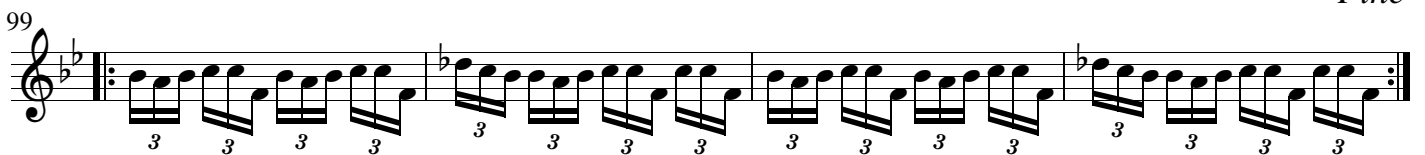
*Jetzt noch mal das Stück in G-Dur
(Takt 59 - 75), aber die letzten
beiden Takte so:*



Danach weiter in Takt 95.



Fine



Musical score for 'Svita iz Šumadije / 4', measures 111 to 129. The score is written in treble clef with a key signature of one flat (B-flat). It features a series of eighth-note triplets and sixteenth-note patterns. Measures 111-113 and 114-117 contain first and second endings. Measures 118-121 also contain first and second endings. The piece concludes with a *dal segno* section starting at measure 126, which includes a double bar line with a sharp sign and a repeat sign.

aus dem Tanzprogramm von Annelies & Erik Tijman

- transponiert -