


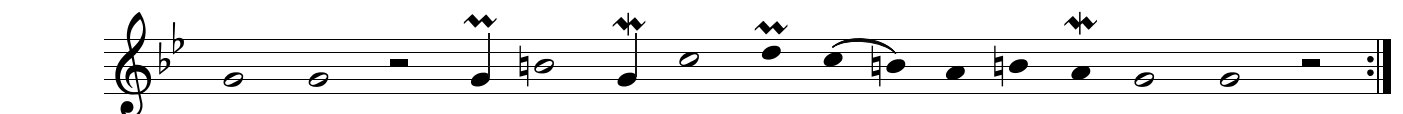
Sevda horonu

Türkei / Schwarzmeerküste

Intro *Tulum; Bordun weiter unter Gesang*

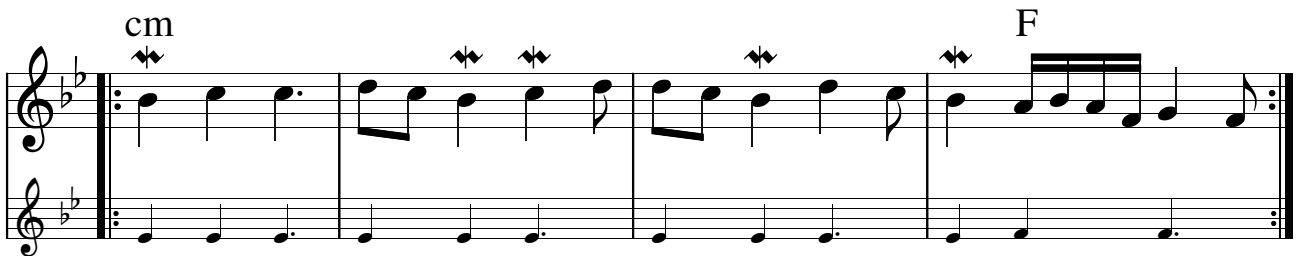
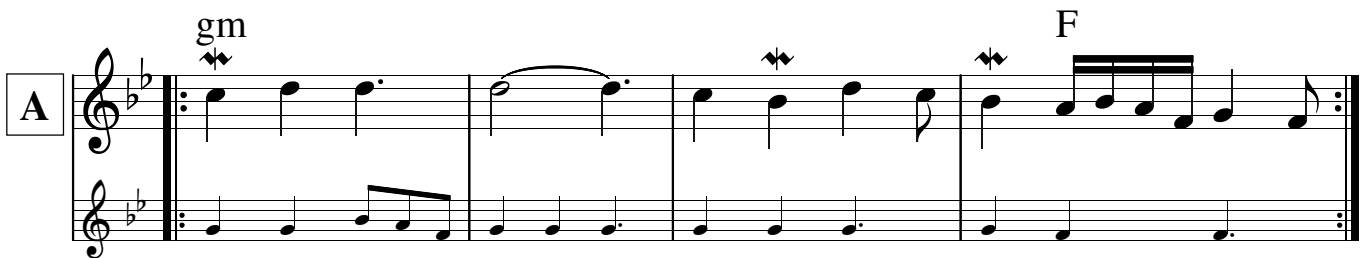


Bordun Ob - ga - ru ob - ga - ru - te to - li va e - yo
Ham to - li - ši çi - lam - bi gu - iş - ki - mis ce -
mat - fen şu - rim - ši - ne to - li va e - yo mat - fen.
ma - ten şu - rim - ši - ne gu - iş - ki - mis ce - ma - ten.



etc.

A

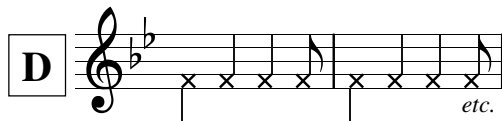


B



e cu - ma me - mi - yu - ci no - si go - gi - şa - şa - sen.

F Fine



insges. 8 T. Perc., danach 40 T. Improv. Tulum

Reihenfolge: Intro A B C B D B

Obgaru obgarute toli va eyomatfen
 şurimşine toli va eyomatfen
 Ham tolişi çilambi guişkimis cematên
 şurimşine guişkimis cematên

// Golas empula yulun xolo çima çimasen //
 // e cuma memiyuci nosi gogişaşasen //

// Xopaşi ar opute tikina ekaberi //
 // gyuli mo miğarğalam şur eşemiğareyi //

// Bulur do gobulur ma ar kulani vareni //
 // E nana kodopskidi soti bozo vareni //

Quelle: 'Golas empula yulun'. CD 'Kardeş Türküler', Kalan Müzik (62) 1997