

C-Instrumente

Melodie & Begleitung

Mandira Hijaz

Hicaz Mandira

Türkei

Mögliche Abfolge 4I|4A|I|4A|B|C|D|E|F|Solos in D Skala|4 A|B|C|D||E|F|G|A
oder auch 4I|4A|I|4A|B|C|D|E|F|Solos in D Skala|C|D||E|F|G|A

I (4x) Ad libitum (z. B. ♩ = 195)

Section I (4x) Ad libitum (z. B. ♩ = 195). The notation consists of two staves in 7/8 time. The first staff contains a melodic line with a sequence of eighth notes: G4, A4, B4, C5, B4, A4, G4. The second staff contains a rhythmic accompaniment of eighth notes: G4, A4, B4, C5, B4, A4, G4. Both staves end with a double bar line and repeat signs.

A (4x)

Section A (4x). The notation consists of two staves. The first staff is in treble clef with a key signature of one sharp (F#) and contains a melodic line: G#4, A4, B4, C5, B4, A4, G4. The second staff is in treble clef and contains a rhythmic accompaniment of eighth notes: G4, A4, B4, C5, B4, A4, G4. Both staves end with a double bar line and repeat signs.

B D

Section B. The notation consists of two staves. The first staff is in treble clef with a key signature of one sharp (F#) and contains a melodic line: G#4, A4, B4, C5, B4, A4, G4. The second staff is in treble clef and contains a rhythmic accompaniment of eighth notes: G4, A4, B4, C5, B4, A4, G4. Both staves end with a double bar line and repeat signs.

C D G

Continuation of Section B. The notation consists of two staves. The first staff is in treble clef with a key signature of one sharp (F#) and contains a melodic line: G#4, A4, B4, C5, B4, A4, G4. The second staff is in treble clef and contains a rhythmic accompaniment of eighth notes: G4, A4, B4, C5, B4, A4, G4. Both staves end with a double bar line and repeat signs.

D

C

D

C G

D/F#

G7/F

C/E

Section C. The notation consists of two staves. The first staff is in treble clef with a key signature of one sharp (F#) and contains a melodic line: G#4, A4, B4, C5, B4, A4, G4. The second staff is in treble clef and contains a rhythmic accompaniment of eighth notes: G4, A4, B4, C5, B4, A4, G4. Both staves end with a double bar line and repeat signs.

G/D

Am/D

D

G

Continuation of Section C. The notation consists of two staves. The first staff is in treble clef with a key signature of one sharp (F#) and contains a melodic line: G#4, A4, B4, C5, B4, A4, G4. The second staff is in treble clef and contains a rhythmic accompaniment of eighth notes: G4, A4, B4, C5, B4, A4, G4. Both staves end with a double bar line and repeat signs.

D G C D G

(Break für Begleitung)

E D A7/D# D

D A7/D# D

F Cm Cm/Bb Am7b5 D G Cm

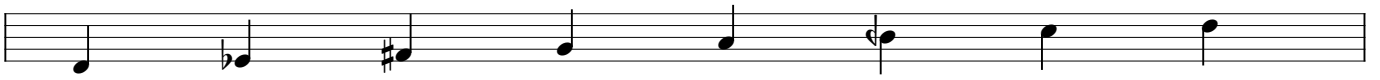
Cm/Bb Am7b5 D

G Cm Cm D G

Cm D

Hijaz in D (im Original 6. Stufe 1/4 Ton)

(B)



oder auch

(B)



Rhythmik

