

Gankino

mazedonisch

g

Erster Takt bei Wiederholung wie Takt 3

This staff contains the first line of music in 11/8 time. It begins with a treble clef, a key signature of two flats (B-flat and E-flat), and a common time signature of 11/8. The melody consists of eighth and quarter notes. A 'g' is written above the first measure. Below the staff, the text 'Erster Takt bei Wiederholung wie Takt 3' is written.

This staff continues the melody from the first staff. It ends with a double bar line and repeat dots.

This staff continues the melody from the second staff. It ends with a double bar line and repeat dots.

b F

This staff continues the melody from the third staff. It begins with a double bar line and repeat dots. The letter 'b' is written above the first measure, and 'F' is written above the eighth measure.

b g

This staff continues the melody from the fourth staff. It begins with a double bar line and repeat dots. The letter 'b' is written above the first measure, and 'g' is written above the eighth measure. It ends with a double bar line and repeat dots.

b g

This staff continues the melody from the fifth staff. It begins with a double bar line and repeat dots. The letter 'b' is written above the first measure, and 'g' is written above the eighth measure. It ends with a double bar line and repeat dots.

D

This staff contains a chordal accompaniment line. It begins with a treble clef and a key signature of two flats. The letter 'D' is written above the first measure. The notes are: D4, F4, Bb4, D5, G4, Bb4, D5, G4.

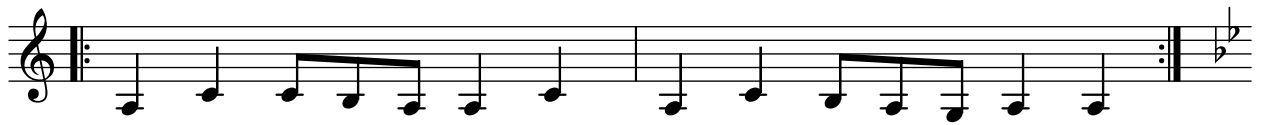
This staff continues the chordal accompaniment from the seventh staff. The notes are: D4, F4, Bb4, D5, G4, Bb4, D5, G4.

This staff continues the chordal accompaniment from the eighth staff. The notes are: D4, F4, Bb4, D5, G4, Bb4, D5, G4.

C

This staff continues the chordal accompaniment from the ninth staff. The letter 'C' is written above the fifth measure. The notes are: D4, F4, Bb4, D5, G4, Bb4, D5, G4.

This staff continues the chordal accompaniment from the tenth staff. The notes are: D4, F4, Bb4, D5, G4, Bb4, D5, G4.



Begleitung in diesem Grundrhythmus. Vier Takte g-moll als Vorspiel.

Melodie: tiefe Klarinette, im Mittelteil Gaida.