

Chori Eleni

Makedonia

(Dimitris)



U.T.

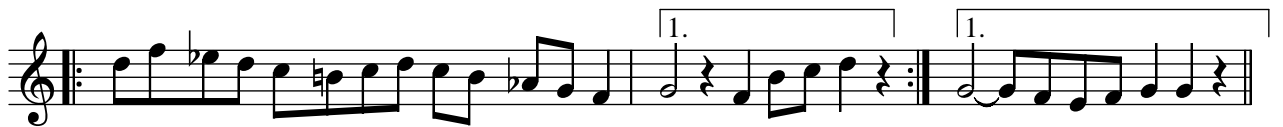
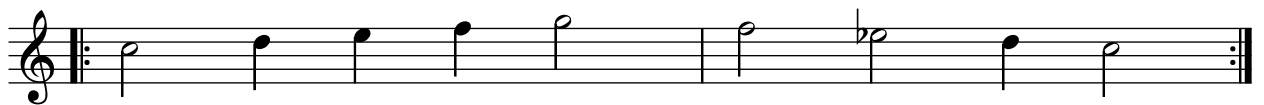


B

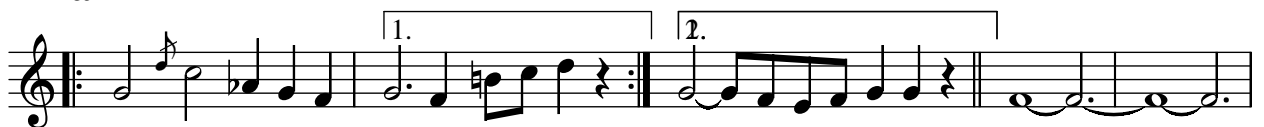


B wiederholen

C



2mal



Musical staff with first and second endings. The first ending is marked with a '1.' and the second ending with a '2.'. The notation includes eighth and quarter notes with rests.

Musical staff with a repeat sign. The notation includes quarter and eighth notes with rests.

2mal

Musical staff with a repeat sign. The notation includes quarter and eighth notes with rests.

E

Musical staff with chords. The notation includes quarter and eighth notes with rests.

(Hörner)

Musical staff for horns. The notation includes quarter and eighth notes with rests.

Musical staff with a long note. The notation includes quarter and eighth notes with rests.

E wiederholen

F

Musical staff with eighth notes. The notation includes quarter and eighth notes with rests.

Musical staff with a final chord. The notation includes quarter and eighth notes with rests. The final chord is marked with 'D' and 'G' above the notes.